



Towards Excellence

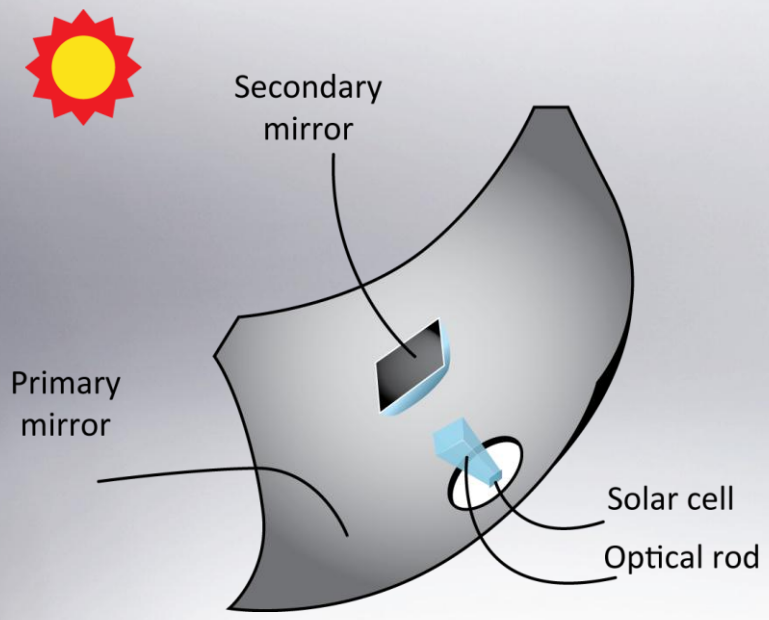
**INNOVATED FOR YOU**



**Mono-crystalline**



**Multi-crystalline**



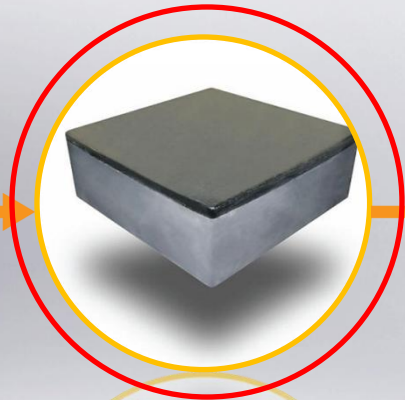
**CPV**



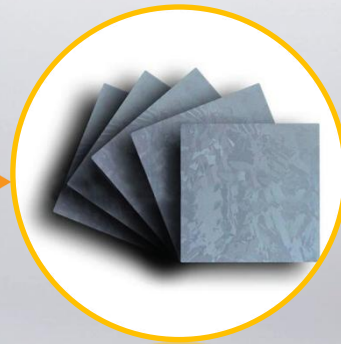
**Thin Film**



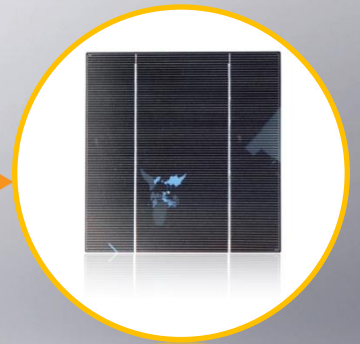
**Silicon Material**



**Ingot**

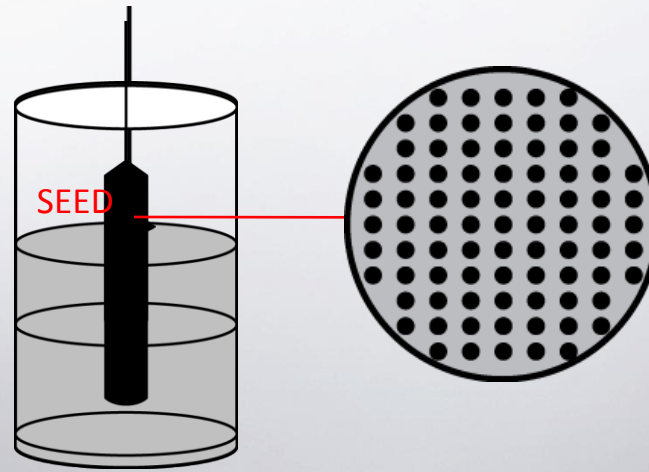


**Wafer**

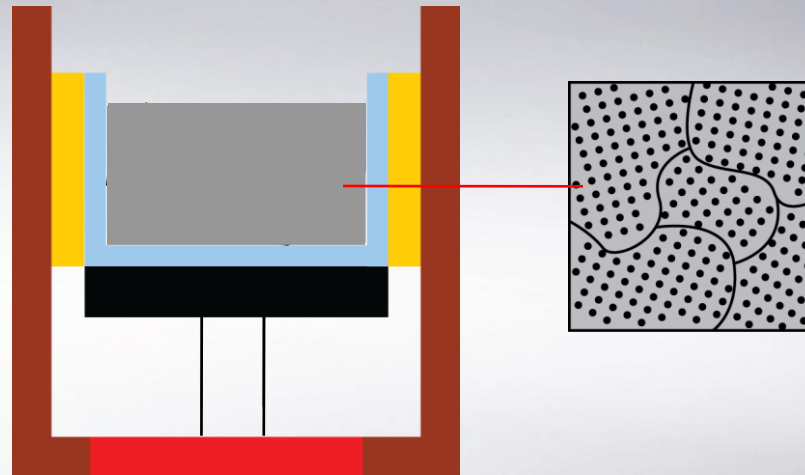


**Cell**

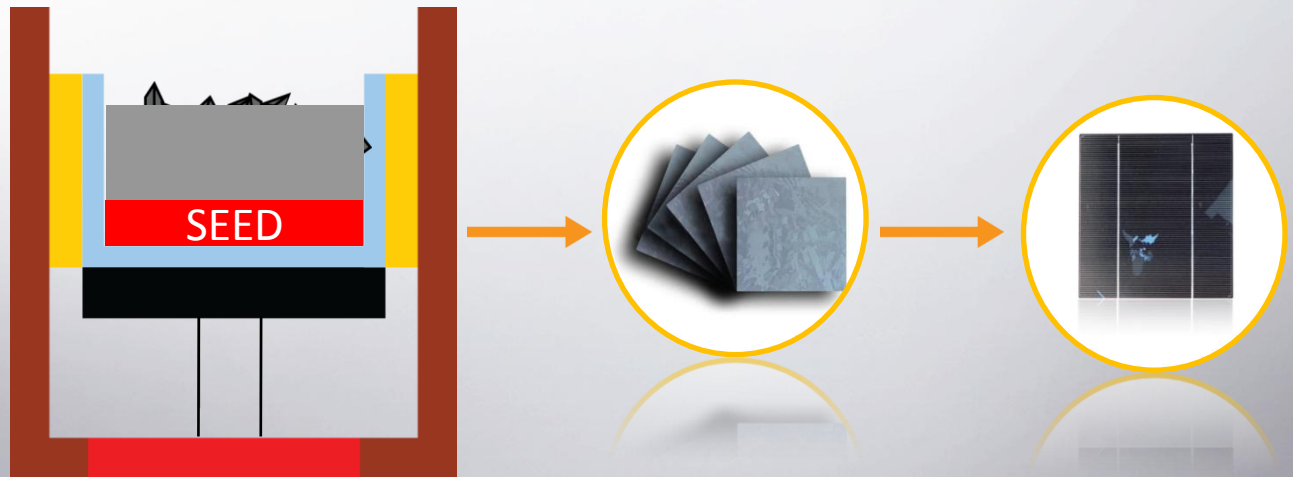
**Mono-crystalline  
Process  
(CZ)**



**Multi-crystalline  
Process  
(DSS)**



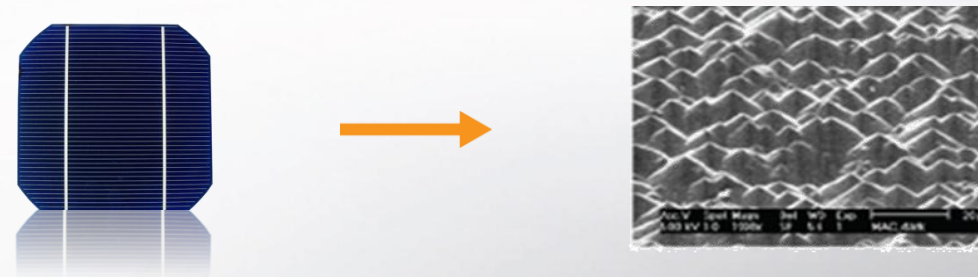
Quasi-Mono

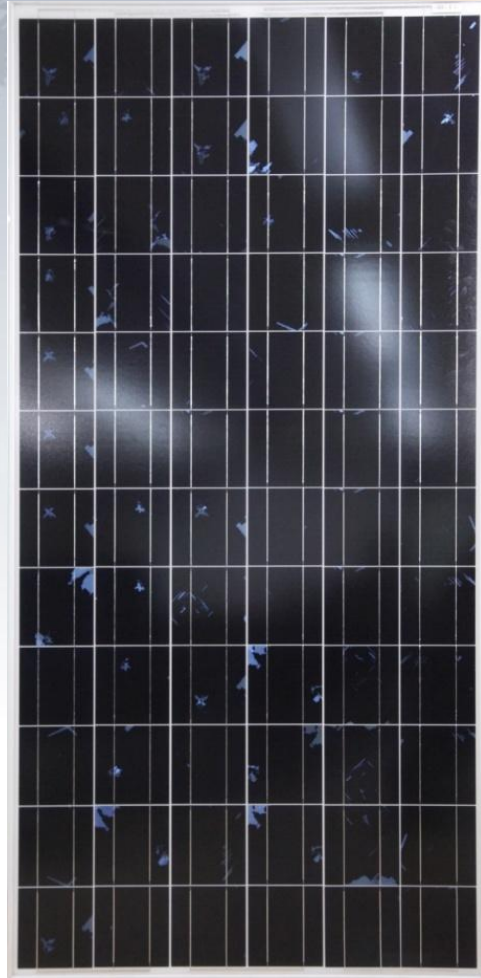
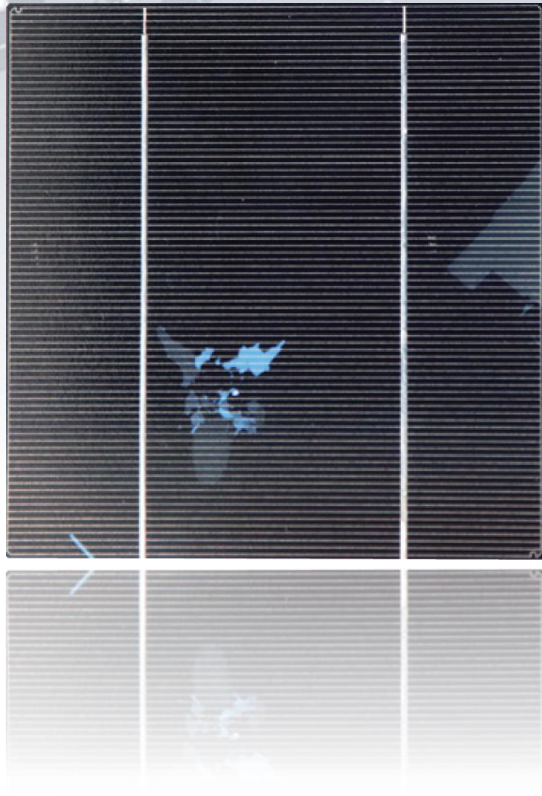


Mono cast  
Process



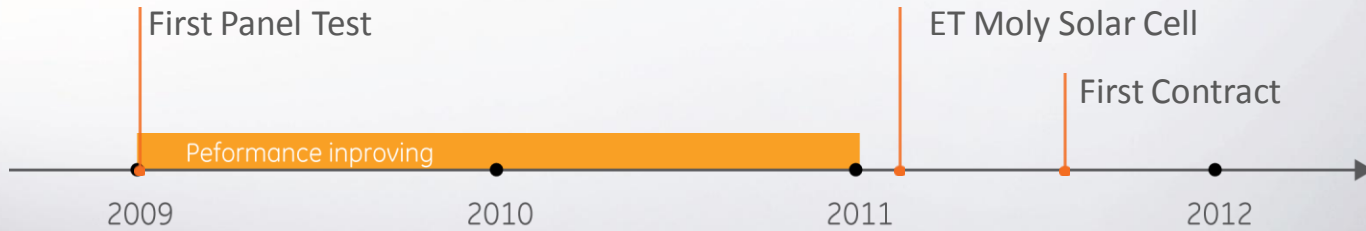
CZ Process



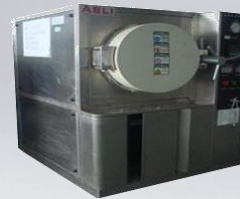
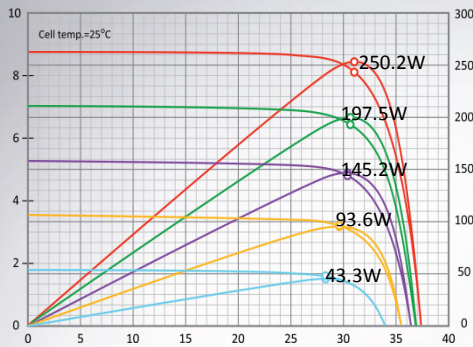




**MOLY**



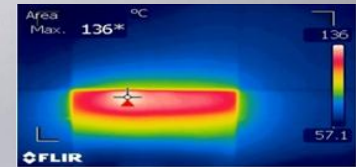
**Power Test**



**Thermal Cycling Test**

**Damp Heat Test**

**Humidity Freeze Test**



**Hot spot Test**



**Outdoor Exposure Test**



**Wet Leakage Current Test**



**MOLY**



ET Solutions AG 235KW Rooftop South Italy

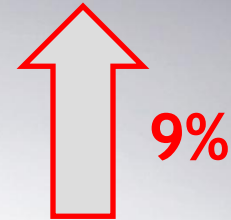
**High Efficiency (Take 60pcs as example)**

Cell Type	Mono	Moly
Power Output	255	255

**Low LID(Light Induced Degradation)**

Cell Type	Mono	Moly
LID Performance	<2.2%	<1.5%

$$IRR = \frac{\text{Moly } 13.23\%}{\text{Mono } 12.16\%}$$



Including module price, BOS, reroofing etc,; Leverage of 80% and 7.5% interest

# Warehouse



**2005.05**  
50MW module production commenced  
**2005.07**  
Product issued with TUV certification

**2006.10**  
ET Solar Global marketing center established  
**2006.12**  
ET Solar brand established, renamed of ET Solar Industry Ltd.

**2007.03**  
ET Solar USA founded  
**2007.11**  
ET Solar GmbH founded  
**2007.11**  
ET Solar 60MW ingot and wafer production commenced

**2008.07**  
US\$51 million private equity fund raising completed  
**2008.08**  
ET Solutions AG founded

**2009.10**  
First domestic project Taizhou Horticulture Expo Garden completed  
**2009.12**  
2MW EPC project in Germany was grid-connected

**2010.10**  
Subsidiary ET Solutions s.r.l established in Italy  
**2010.12**  
ET Solar 150MW cell production commenced

**2011.07**  
Announces US\$50 million private equity placement  
**2011.08**  
Upgrade brand logo and slogan

Towards Excellence

Photovoltaics is our passion

Passion for Green

2005

2006

2007

2008

2009

2010

2011

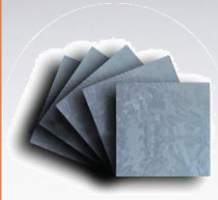
2012



Poly



Mono



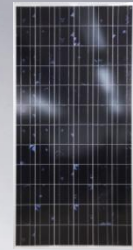
Wafer



Transparent



Cell



Mono-Like

**Stronger Safety**

**Environment Adaptability**

**Building Integrability**

**Individual Functionality**



## **Stronger Safety**



**Insulation**



**Mechanical  
Load**

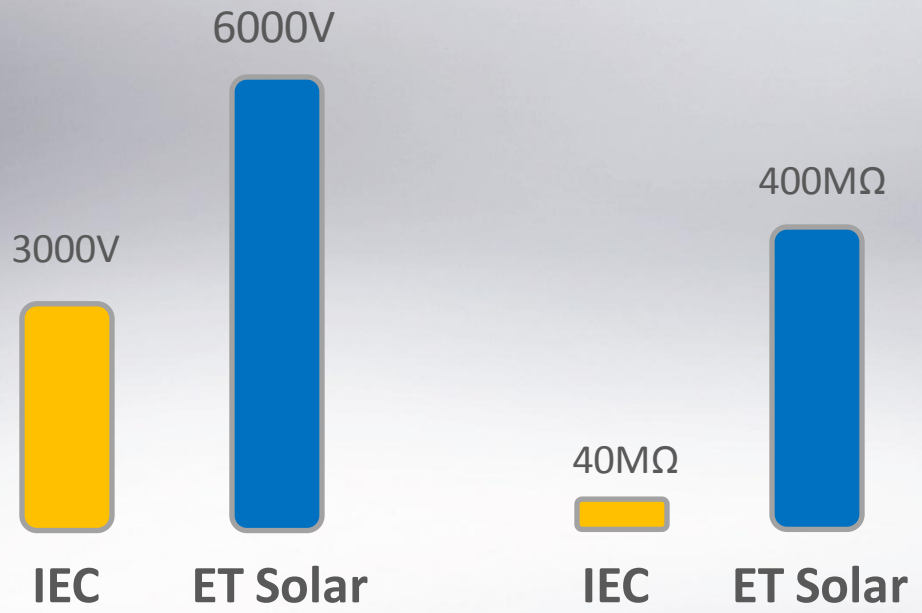


**Mounting  
& Installation**



## Insulation

High Voltage Test  
Insulation Resistance  
Safety Class II





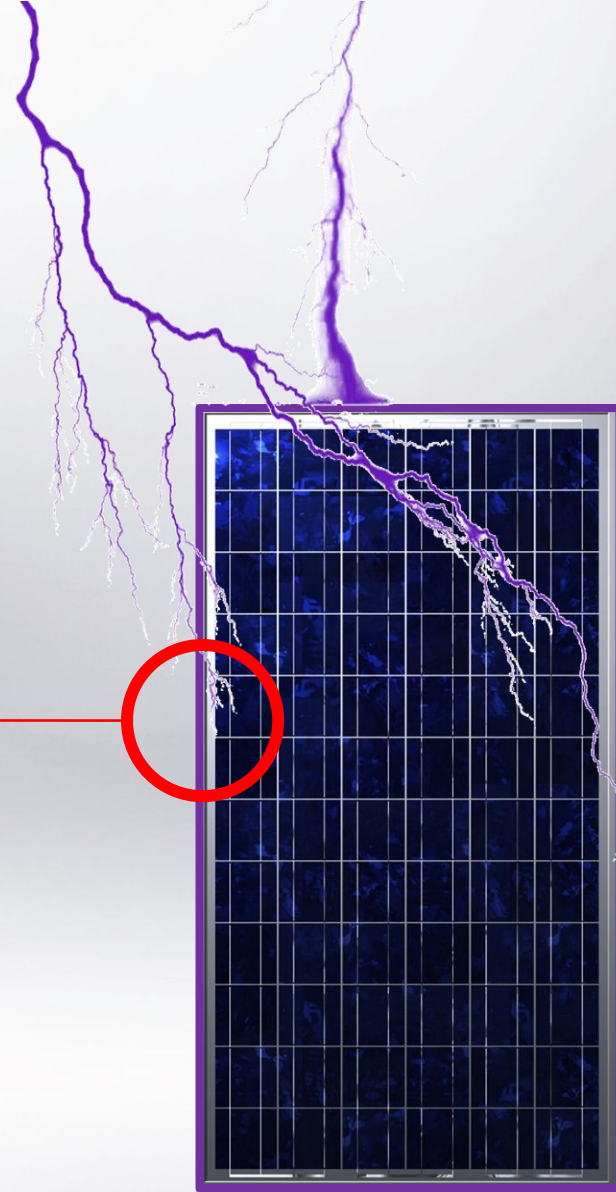


## Insulation

High Voltage test  
Insulation Resistance  
Safety Class II

**6000V**

**400M $\Omega$**





## Mechanical Load

5400Pa Mechanical Load



2400Pa

77-90cm



IEC 61215 ETC Solar



## Mounting & Installation



**Global team to support installation**



# Environment Adaptability

Sea Side



Salt spray test  
IEC 61701

Green House



Ammonia test  
DLG

Tropics



Good performance in  
Damp heat environment

Light Limited



Anti-glare

# Environment Adaptability

Sea Side



IEC61701



**NEW**  
new arrival

# Green House



**NEW**  
new arrival



# Environment Adaptability

Tropics



Ingress Protection

**IP67**

Vapor Infiltration

**10 times**



Coming  
Soon!

New Laminate  
Material



# Environment Adaptability

Light Limited



For safety regulation, the maximum luminance need to be less than  $8000\text{cd/m}^2$

module maximum luminance under 1 sun

$>80000\text{cd/m}^2$

$6700\text{cd/m}^2$



Normal

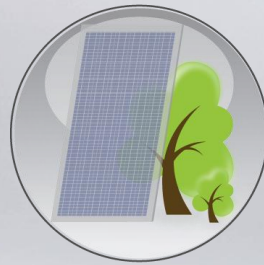
Anti-Glare



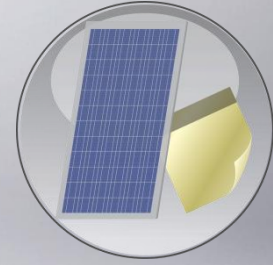
# Building Integrability



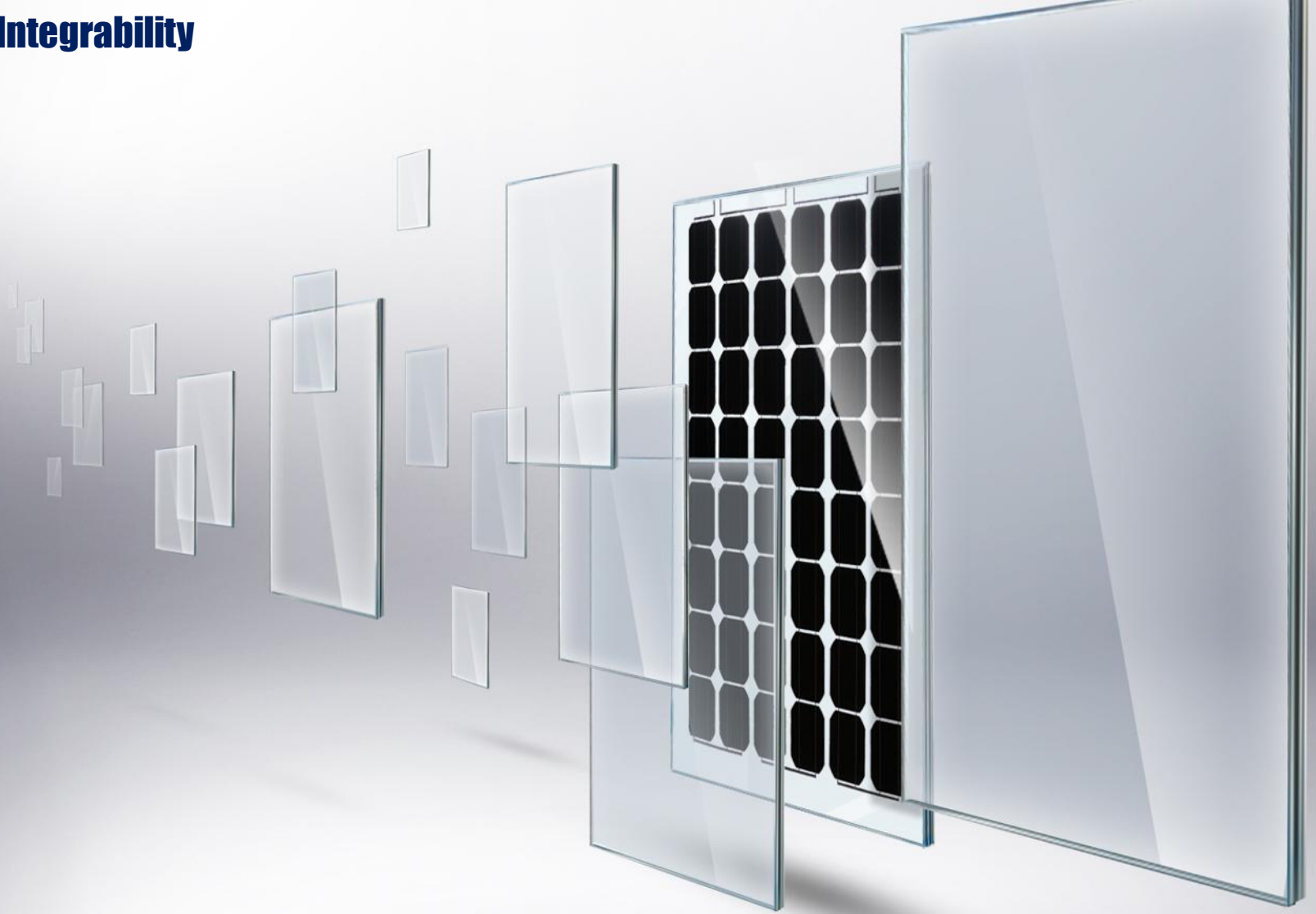
**Glass-Glass Module**



**Transparent Module**



**Attach-It Module**

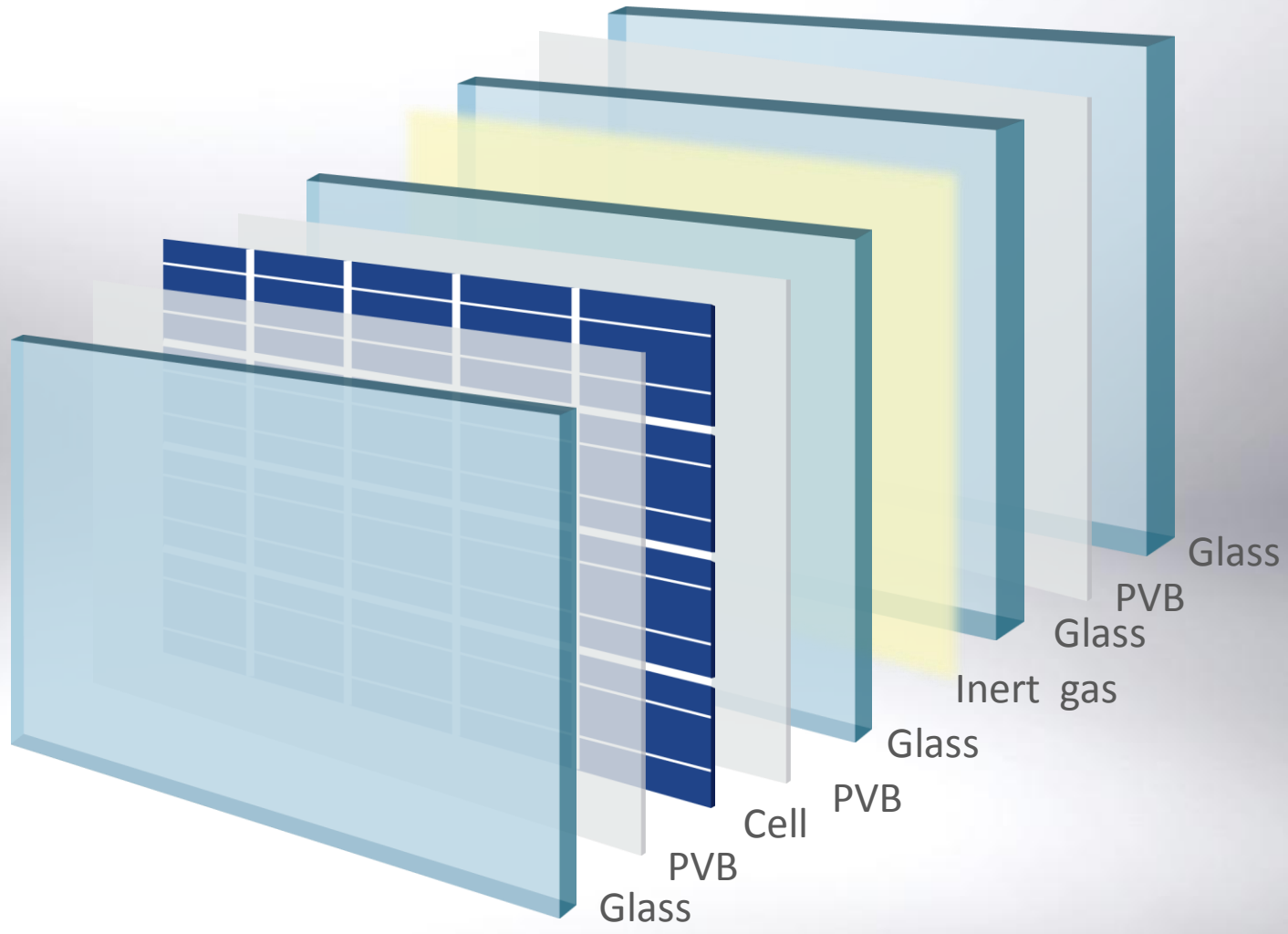


**Glass-Glass Module**

# Building Integrability



Glass-Glass Module



# Building Integrability



Glass-Glass Module

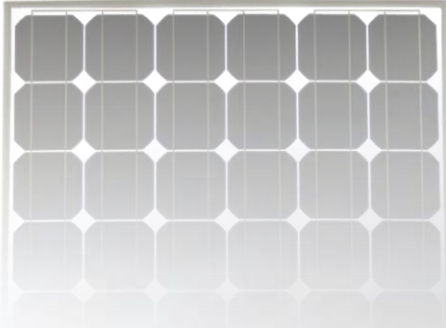
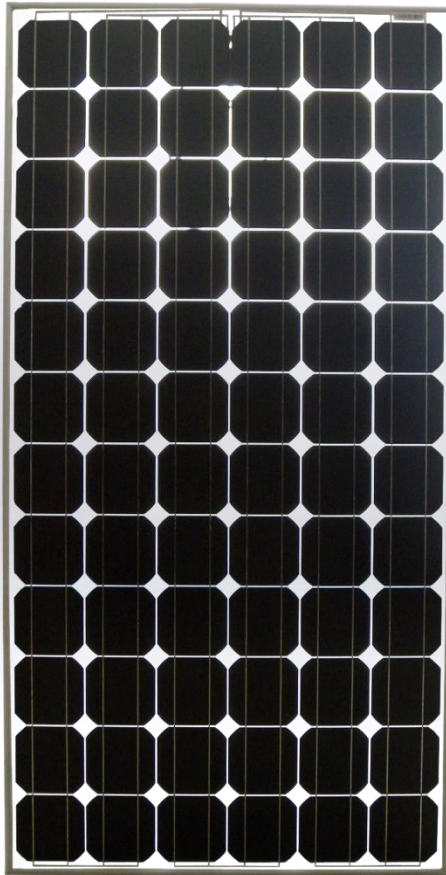


Coming  
Soon!

# Building Integrability



Transparent Module





Installation wattage: 2.65MW

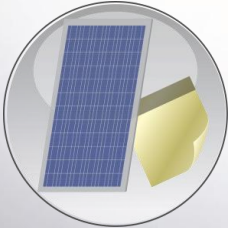
Module type: ET-M572190TL

Date of on grid: October, 2011

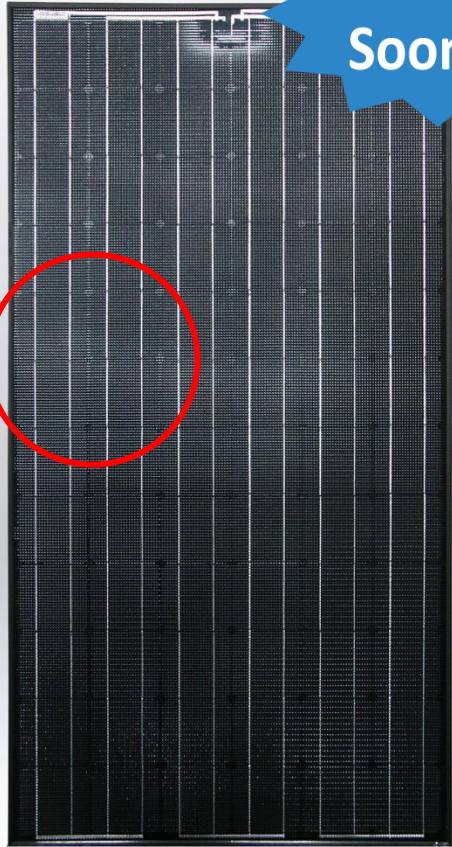
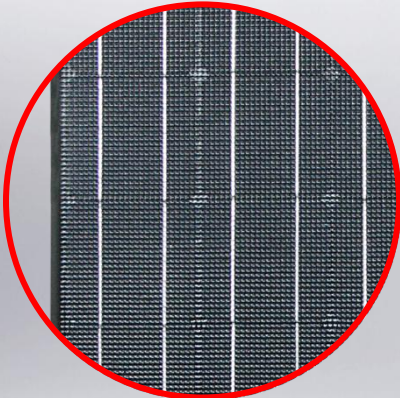
Location: Cruas France



# Building Integrability



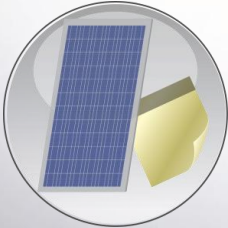
Attach-It Module



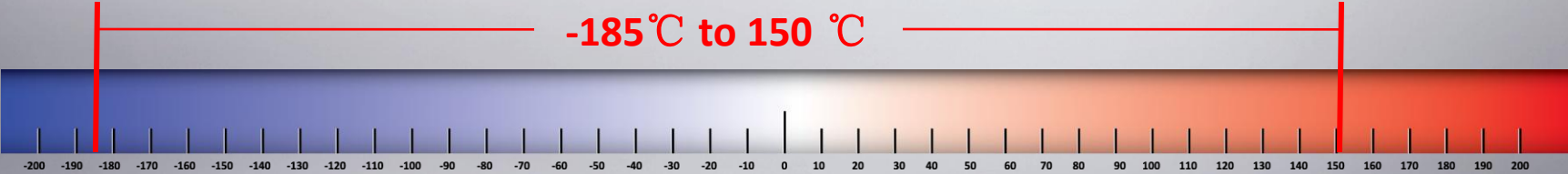
Coming  
Soon!

**Attach-It**

# Building Integrability



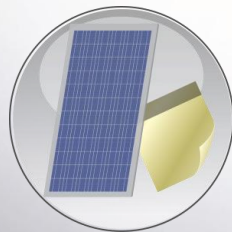
Attach-It Module



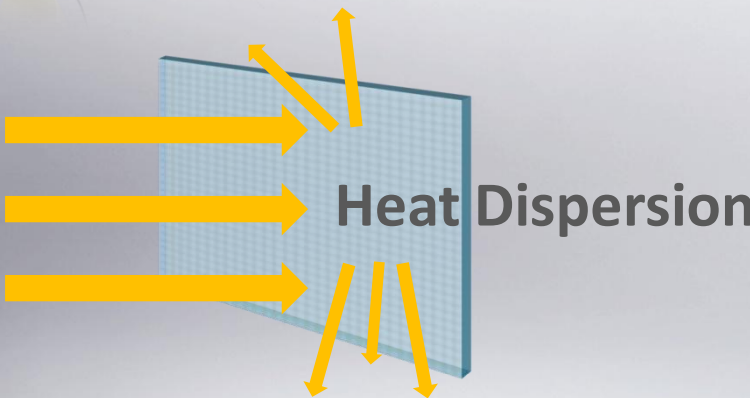
# The Water Cube of the 2008 Olympics



# Building Integrability



Attach-It Module



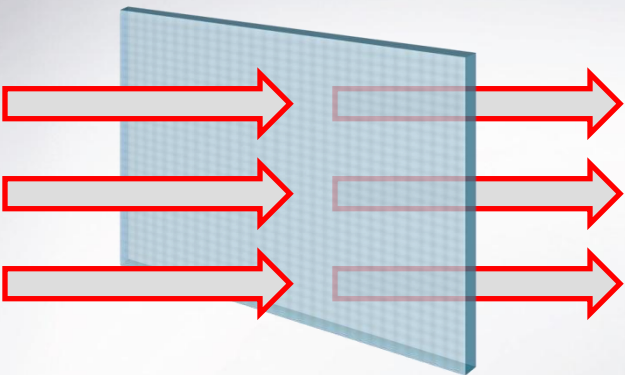
Attach-It Module



Normal Module



Weight **25%↓**



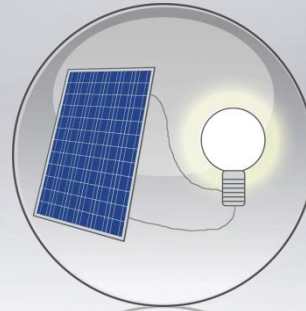
Transparency **3.5% ↑**

Power Output **3.0% ↑**

# Individual Functionality



MPPT Module

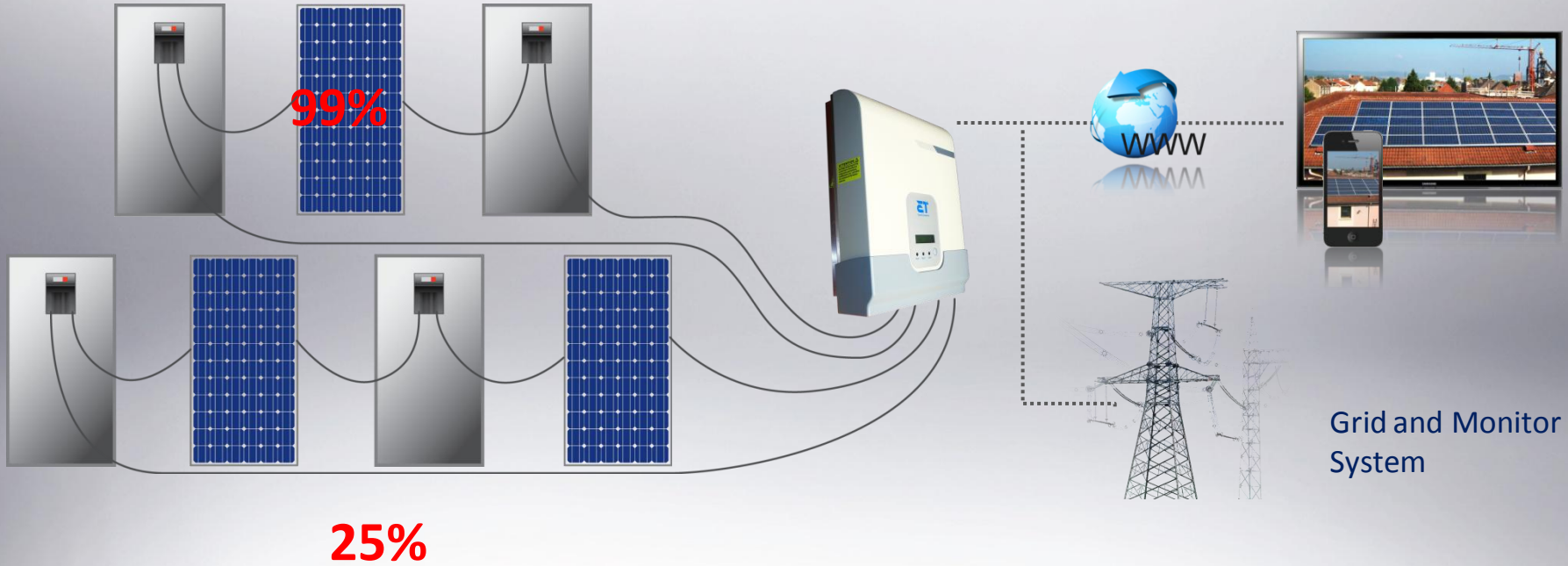


AC Module

# Individual Functionality

MPPT Module

Coming Soon!

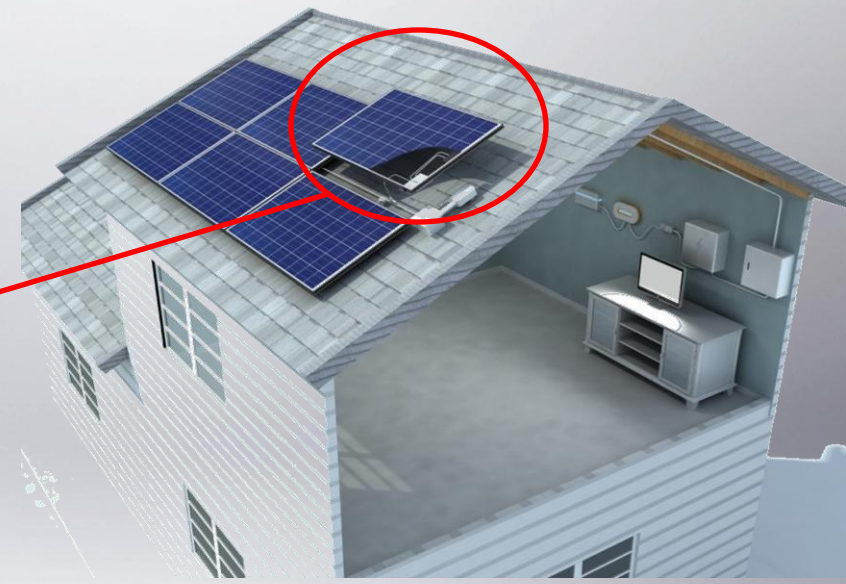


Grid and Monitor System

# Individual Functionality

AC Module

**NEW**  
new arrival



# **Solution Products**





**Zero-Rack**



**Colorful Modules**



**NEW**  
new arrival

**PV Rack System**

**NEW**  
new arrival



PPC-500



PPC-1000

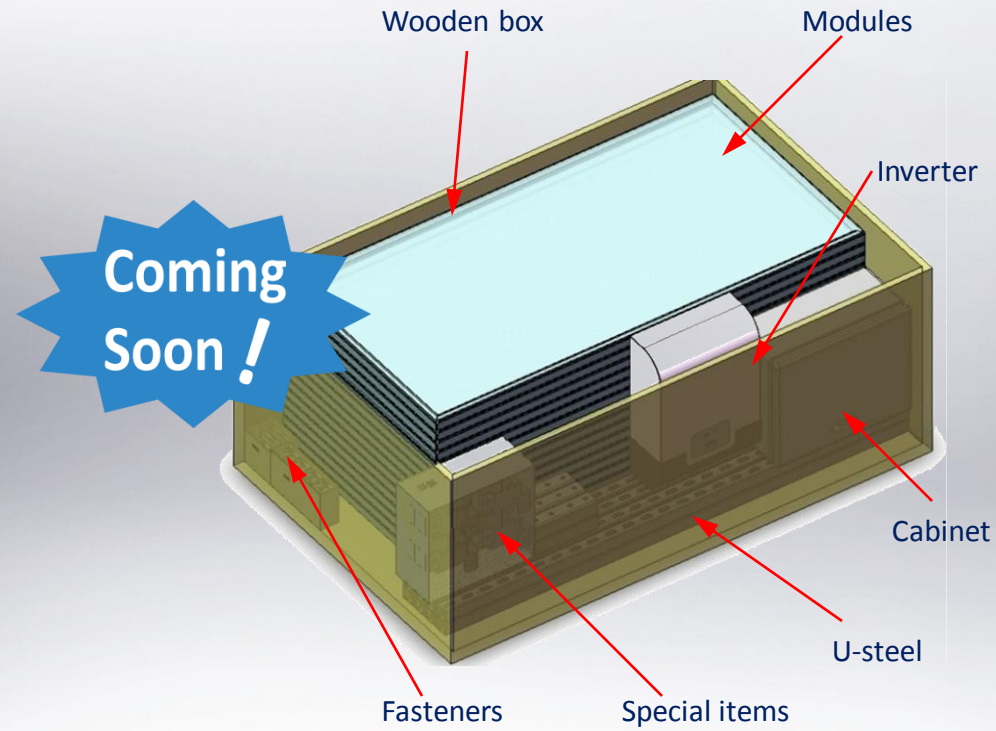


PPC-3000

**Stand Alone**



**Rooftop BIPV Mounting System**



**PV Kit**



**Inverter**

**What we have tomorrow?**

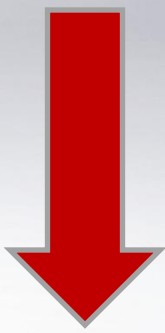


# “Grid Parity”

**Efficiency**



**Cost**



# MWT (Video)

**INNOVATED FOR YOU**

[www.etsolar.com](http://www.etsolar.com)

**Thank you**

P660 Module	P672 Module	M572 Module	M660 Module	M672 Module	L660 Module
L672 Module	Easy Grounding Module	Fire Resistant Module	High Insulation Module	Tropical Module	Polar Module
Transparent Module	Color Transparent Module	Salt Mist Module	Anti- AmmoniaM odule	High Strength Module	Glass/Glass Module
Color Glass/Glass Module	4layers with Nitrogen Module	Back Contact Module	DC Module	AC Module	AG Module
Dual-Box Module	All Blue Module	Quick Grounding installation	Rooftop insert Module solution	KIT	Zero-Rack
Light Module	Color BackSheet	Hurricane- resistant Mounting	Quick Rooftop Installation	Off-Grid All-In-One	Charging Station